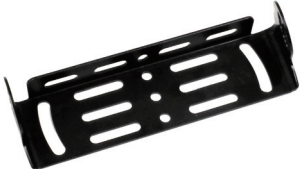


KRK-18H

SUPPLIED ITEMS



Main body panel assembly 1



Mounting bracket (J29-0698-13)..... 1



Molding cover (FOG-0002-00)..... 1



FFC (E3G-0065-00)..... 1



Dressed screw (N08-0550-14)2



Screw set (N9X-0009-00) 1
• Self tapping screw
• Spring washer
• Flat washer

PRECAUTIONS

- This product is exclusively for use with NX-3000 series.
- To install this product, refer to the service manual of NX-3000 series.