

# KENWOOD

## TK-D240

## TK-D340

VHF DIGITAL TRANSCEIVER

UHF DIGITAL TRANSCEIVER

## USER GUIDE

This User Guide covers only the basic operations of your radio. Ask your dealer for information on any customized features they may have added to your radio. For using details instruction manual (User Manual), refer to the following URL.

[http://manual.kenwood.com/en\\_contents/search/keyword](http://manual.kenwood.com/en_contents/search/keyword)



JVCKENWOOD Corporation

B5A-0931-00 (M, C)



# THANK YOU

We are grateful you have chosen **KENWOOD** for your Digital Transceiver applications.

## CONTENTS

<b>NOTICES TO THE USER</b> .....	<b>3</b>
PRECAUTIONS.....	4
<b>UNPACKING AND CHECKING EQUIPMENT</b> .....	<b>9</b>
SUPPLIED ACCESSORIES .....	9
<b>PREPARATION</b> .....	<b>9</b>
INSTALLING THE ANTENNA .....	9
INSTALLING THE CHANNEL STOPPER.....	10
INSTALLING/ REMOVING THE BATTERY PACK .....	11
INSTALLING THE BELT CLIP.....	12
INSTALLING THE CAP OVER THE SPEAKER/ MICROPHONE JACKS.....	12
INSTALLING THE OPTIONAL SPEAKER/ MICROPHONE (OR HEADSET).....	13
<b>ORIENTATION</b> .....	<b>14</b>
<b>BASIC OPERATIONS</b> .....	<b>15</b>
SWITCHING POWER ON/OFF.....	15
ADJUSTING THE VOLUME.....	15
SELECTING A ZONE AND CHANNEL .....	15
TRANSMITTING .....	15
RECEIVING.....	16
LED INDICATOR STATUS .....	16

### Firmware Copyrights

The title to and ownership of copyrights for firmware embedded in KENWOOD product memories are reserved for JVC KENWOOD Corporation.

## NOTICES TO THE USER

- ◆ Government law prohibits the operation of unlicensed radio transmitters within the territories under government control.
- ◆ Illegal operation is punishable by fine and/or imprisonment.
- ◆ Refer service to qualified technicians only.

**Safety:** It is important that the operator is aware of, and understands, hazards common to the operation of any transceiver.

**One or more of the following statements may be applicable:**

### FCC WARNING

This equipment generates or uses radio frequency energy. Changes or modifications to this equipment may cause harmful interference unless the modifications are expressly approved by the party responsible/ JVC KENWOOD. The user could lose the authority to operate this equipment if an unauthorized change or modification is made.

### INFORMATION TO THE DIGITAL DEVICE USER REQUIRED BY THE FCC

This equipment has been tested and found to comply with the limits for a Class B digital device, pursuant to Part 15 of the FCC Rules. These limits are designed to provide reasonable protection against harmful interference in a residential installation.

This equipment generates, uses and can generate radio frequency energy and, if not installed and used in accordance with the instructions, may cause harmful interference to radio communications. However, there is no guarantee that the interference will not occur in a particular installation. If this equipment does cause harmful interference to radio or television reception, which can be determined by turning the equipment off and on, the user is encouraged to try to correct the interference by one or more of the following measures:

- Reorient or relocate the receiving antenna.
- Increase the separation between the equipment and receiver.
- Connect the equipment to an outlet on a circuit different from that to which the receiver is connected.
- Consult the dealer for technical assistance.

The AMBE+2™ voice coding Technology embodied in this product is protected by intellectual property rights including patent rights, copyrights and trade secrets of Digital Voice Systems, Inc. This voice coding Technology is licensed solely for use within this Communications Equipment. The user of this Technology is explicitly prohibited from attempting to extract, remove, decompile, reverse engineer, or disassemble the Object Code, or in any other way convert the Object Code into a human-readable form. U.S. Patent Nos. #6,199,037, #6,912,495, #8,200,497, #7,970,606, and #8,359,197

## PRECAUTIONS

- Do not charge the transceiver and battery pack when they are wet.
- Ensure that there are no metallic items located between the transceiver and the battery pack.
- Do not use options not specified by **KENWOOD**.
- If the die-cast chassis or other transceiver part is damaged, do not touch the damaged parts.
- If a headset or headphone is connected to the transceiver, reduce the transceiver volume. Pay attention to the volume level when turning the squelch off.
- Do not place the microphone cable around your neck while near machinery that may catch the cable.
- Do not place the transceiver on unstable surfaces.
- Ensure that the end of the antenna does not touch your eyes.
- When the transceiver is used for transmission for many hours, the radiator and chassis will become hot. Do not touch these locations when replacing the battery pack.
- Do not immerse the transceiver in water.
- Always switch the transceiver power off before installing optional accessories.
- The charger is the device that disconnects the unit from the AC mains line. The AC plug should be readily accessible.
- To dispose of batteries, be sure to comply with the laws and regulations in your country or region.



### WARNING

Turn the transceiver power off in the following locations:

- In explosive atmospheres (flammable gas, dust particles, metallic powders, grain powders, etc.).
- While taking on fuel or while parked at gasoline service stations.
- Near explosives or blasting sites.
- In aircraft. (Any use of the transceiver must follow the instructions and regulations provided by the airline crew.)
- Where restrictions or warnings are posted regarding the use of radio devices, including but not limited to medical facilities.
- Near persons using pacemakers.



## CAUTION

- Do not disassemble or modify the transceiver for any reason.
- Do not place the transceiver on or near airbag equipment while the vehicle is running. When the airbag inflates, the transceiver may be ejected and strike the driver or passengers.
- Do not transmit while touching the antenna terminal or if any metallic parts are exposed from the antenna covering. Transmitting at such a time may result in a high-frequency burn.
- If an abnormal odor or smoke is detected coming from the transceiver, switch the transceiver power off immediately, remove the battery pack from the transceiver, and contact your **KENWOOD** dealer.
- Use of the transceiver while you are driving may be against traffic laws. Please check and observe the vehicle regulations in your area.
- Do not expose the transceiver to extremely hot or cold conditions.
- Do not carry the battery pack (or battery case) with metal objects, as they may short the battery terminals.
- Danger of explosion if the battery is incorrectly replaced; replace only with the same type.
- When attaching a commercial strap to the transceiver, ensure that the strap is durable. In addition, do not swing the transceiver around by the strap; you may inadvertently strike and injure another person with the transceiver.
- If a commercially available neck strap is used, take care not to let the strap get caught on nearby machine.
- When operating the transceiver in areas where the air is dry, it is easy to build up an electric charge (static electricity). When using an earphone accessory in such conditions, it is possible for the transceiver to send an electric shock through the earphone and to your ear. We recommend you use only a speaker/microphone in these conditions, to avoid electric shocks.
- Do not expose the transceiver to long periods of direct sunlight, nor place it near heating appliances.

## Information concerning the battery pack:

The battery pack includes flammable objects such as organic solvent. Mishandling may cause the battery to rupture producing flames or extreme heat, deteriorate, or cause other forms of damage to the battery. Please observe the following prohibitive matters.



### DANGER

- **Do not disassemble or reconstruct battery!**

The battery pack has a safety function and protection circuit to avoid danger. If they suffer serious damage, the battery may generate heat or smoke, rupture, or burst into flame.

- **Do not short-circuit the battery!**

Do not join the + and – terminals using any form of metal (such as a paper clip or wire). Do not carry or store the battery pack in containers holding metal objects (such as wires, chain-necklaces or hairpins). If the battery pack is short-circuited, excessive current will flow and the battery may generate heat or smoke, rupture, or burst into flame. It will also cause metal objects to heat up.

- **Do not incinerate or apply heat to the battery!**

If the insulator is melted, the gas release vent or safety function is damaged, or the electrolyte is ignited, the battery may generate heat or smoke, rupture, or burst into flame.

- **Do not leave the battery near fire, stoves, or other heat generators (areas reaching over 80°C/ 176°F)!**

If the polymer separator is melted due to high temperature, an internal short-circuit may occur in the individual cells and the battery may generate heat or smoke, rupture, or burst into flame.

- **Do not immerse the battery in water or get it wet by other means!**

If the battery's protection circuit is damaged, the battery may charge at extreme current (or voltage) and an abnormal chemical reaction may occur. The battery may generate heat or smoke, rupture, or burst into flame.

- **Do not charge the battery near fire or under direct sunlight!**

If the battery's protection circuit is damaged, the battery may charge at extreme current (or voltage) and an abnormal chemical reaction may occur. The battery may generate heat or smoke, rupture, or burst into flame.



## DANGER

- **Use only the specified charger and observe charging requirements!**

If the battery is charged in unspecified conditions (under high temperature over the regulated value, excessive high voltage or current over regulated value, or with a remodeled charger), it may overcharge or an abnormal chemical reaction may occur. The battery may generate heat or smoke, rupture, or burst into flame.

- **Do not pierce the battery with any object, strike it with an instrument, or step on it!**

This may break or deform the battery, causing a short-circuit. The battery may generate heat or smoke, rupture, or burst into flame.

- **Do not jar or throw the battery!**

An impact may cause the battery to leak, generate heat or smoke, rupture, and/or burst into flame. If the battery's protection circuit is damaged, the battery may charge at an abnormal current (or voltage), and an abnormal chemical reaction may occur. The battery may generate heat or smoke, rupture, or burst into flame.

- **Do not use the battery pack if it is damaged in any way!**

The battery may generate heat or smoke, rupture, or burst into flame.

- **Do not solder directly onto the battery!**

If the insulator is melted or the gas release vent or safety function is damaged, the battery may generate heat or smoke, rupture, or burst into flame.

- **Do not reverse the battery polarity (and terminals)!**

When charging a reversed battery, an abnormal chemical reaction may occur. In some cases, an unexpected large amount of current may flow upon discharging. The battery may generate heat or smoke, rupture, or burst into flame.

- **Do not reverse-charge or reverse-connect the battery!**

The battery pack has positive and negative poles. If the battery pack does not smoothly connect with a charger or operating equipment, do not force it; check the polarity of the battery. If the battery pack is reverse-connected to the charger, it will be reverse-charged and an abnormal chemical reaction may occur. The battery may generate heat or smoke, rupture, or burst into flame.



## DANGER

- **Do not touch a ruptured and leaking battery!**

If the electrolyte liquid from the battery gets into your eyes, wash your eyes with fresh water as soon as possible, without rubbing your eyes. Go to the hospital immediately. If left untreated, it may cause eye-problems.



## WARNING

- **Do not charge the battery for longer than the specified time!**

If the battery pack has not finished charging even after the regulated time has passed, stop it. The battery may generate heat or smoke, rupture, or burst into flame.

- **Do not place the battery pack into a microwave or high pressure container!**

The battery may generate heat or smoke, rupture, or burst into flame.

- **Keep ruptured and leaking battery packs away from fire!**

If the battery pack is leaking (or the battery emits a bad odor), immediately remove it from flammable areas. Electrolyte leaking from battery can easily catch on fire and may cause the battery to generate smoke or burst into flame.

- **Do not use an abnormal battery!**

If the battery pack emits a bad odor, appears to have different coloring, is deformed, or seems abnormal for any other reason, remove it from the charger or operating equipment and do not use it. The battery may generate heat or smoke, rupture, or burst into flame.



---

---

## UNPACKING AND CHECKING EQUIPMENT

---

---

Carefully unpack the transceiver. If any of the items listed below are missing or damaged, file a claim with the carrier immediately.

### SUPPLIED ACCESSORIES

- Antenna <TK-D340 C type only>..... 1
- Speaker/ microphone jack cover ..... 1
- Speaker/ microphone locking bracket..... 1
- Belt clip (KBH-10)..... 1
- Screw (M3 x 8 mm) ..... 2
- Channel stopper ..... 1
- User Guide ..... 1

---

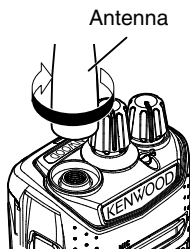
---

## PREPARATION

---

---

### INSTALLING THE ANTENNA



Screw the antenna into the connector on the top of the transceiver by holding the antenna at its base and turning it clockwise until secure.

---

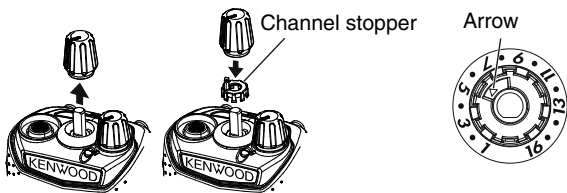
#### Note:

- ◆ The antenna is neither a handle, a key ring retainer, nor a speaker/ microphone attachment point. Using the antenna in these ways may damage the antenna and degrade your transceiver's performance.
-

## INSTALLING THE CHANNEL STOPPER

You can set the channel stopper position for channels 2, 4, 6, 8, 10, 12, and 14. Inserting the Channel stopper prevents unnecessarily selecting channels which do not exist.

- Selecting a channel which does not exist causes a continuous error tone to sound.
- 1 Set the Channel selector to channel 1, then pull the Channel selector knob off the transceiver.
    - If the Channel selector is not positioned at channel 1, the knob may not install correctly and the channel may be unable to change.
  - 2 Insert the channel stopper.
  - 3 Set the arrow of the Channel stopper to the highest channel number for the transceiver.
  - 4 Reinsert the Channel selector knob.



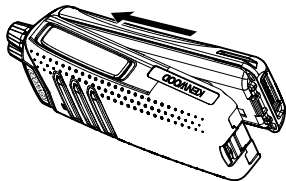
## INSTALLING/ REMOVING THE BATTERY PACK

The battery pack is not charged at the factory; charge it before use.

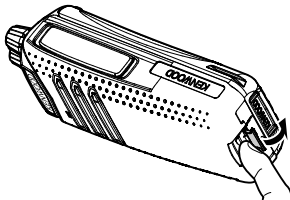


### CAUTION

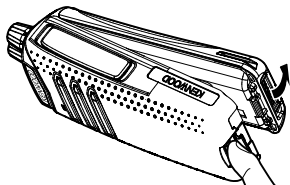
- ◆ Do not short the battery terminals or dispose of the battery by fire.
- ◆ Never attempt to remove the casing from the battery pack.



- 1 Align the battery pack with the back of the transceiver, then press the battery pack and transceiver firmly together until the release latch on the base of the transceiver locks.

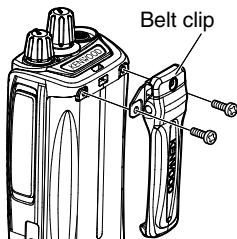


- 2 To remove the battery pack, lift the safety catch on the base of the transceiver, then press the release latch underneath the safety catch.



- 3 While pressing the release latch, pull the battery pack away from the transceiver.

## INSTALLING THE BELT CLIP



If necessary, attach the belt clip using the two supplied M3 x 8 mm screws.

---

### Note:

- ◆ If the belt clip is not installed, its mounting location may get hot during continuous transmission or when left sitting in a hot environment.
- 



### CAUTION

- ◆ Do not use glue which is designed to prevent screw loosening when installing the belt clip, as it may cause damage to the transceiver. Acrylic ester, which is contained in these glues, may crack the transceiver's back panel.

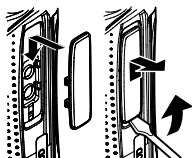
## INSTALLING THE CAP OVER THE SPEAKER/ MICROPHONE JACKS

Install the cap over the speaker/ microphone jacks when not using an optional speaker/ microphone or headset.

---

### Note:

- ◆ To keep the transceiver water resistant, you must cover the speaker/ microphone jacks with the supplied cap.
- 



- 1 Place the cap over the jacks so that the locking tabs insert into the transceiver grooves.
- 2 While holding the cap in place, push it towards the bottom of the transceiver until the tabs on the cap click into place.

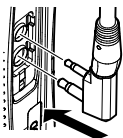
- To remove the cap, hold the top of the cap in place with your finger while inserting a 2 mm or smaller flat blade screwdriver under the bottom of the cap. Slowly slide the screwdriver in until its tip touches the tab inside the cap, then gently pry the cap up (handle of screwdriver moving away from the transceiver) to remove the cap.

## INSTALLING THE OPTIONAL SPEAKER/ MICROPHONE (OR HEADSET)

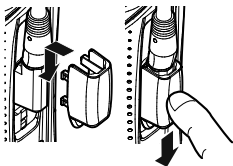
---

### Note:

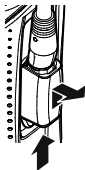
- ◆ The transceiver is not fully water resistant when using a speaker/ microphone or headset.
- 



- 1 Insert the speaker/ microphone (or headset) plugs into the speaker/ microphone jacks of the transceiver.



- 2 Place the locking bracket over the speaker/ microphone (or headset) plugs so that the locking tabs insert into the transceiver grooves.
  - Push down on the locking bracket to slide it into place.



- 3 While holding the locking bracket in place, push it towards the bottom of the transceiver until the tabs on the bracket click into place.
  - To remove the locking bracket, push the bracket up from the base.

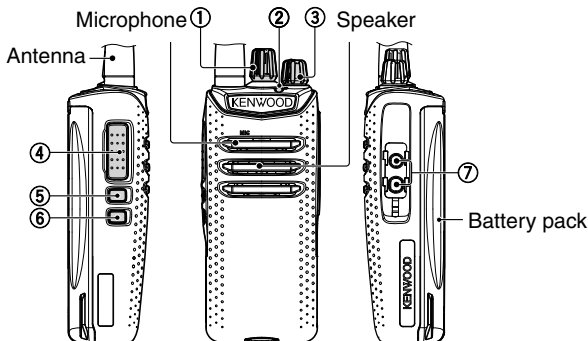
---

---

## ORIENTATION

---

---



- ① **Selector**  
Rotate to change the operating channel.
- ② **LED indicator**  
For the LED indicator status, refer to page 16.
- ③ **Power switch/ Volume control**  
Turn clockwise to switch ON the transceiver. To switch OFF the transceiver, turn counterclockwise until a click sounds. Rotate to adjust the volume level.
- ④ **PTT (Push to Talk) switch**  
Press and hold, then speak into the microphone to transmit.
- ⑤ **Side 1 key**  
Press to activate its programmable function.
- ⑥ **Side 2 key**  
Press to activate its programmable function.
- ⑦ **Speaker/ microphone jacks**  
Insert the Speaker/ microphone or Headset plug into this jack.

---

---

## BASIC OPERATIONS

---

---

### SWITCHING POWER ON/OFF

Turn the **Power** switch/ **Volume** control clockwise to switch the transceiver ON.

Turn the **Power** switch/ **Volume** control counterclockwise fully to switch the transceiver OFF.

### ADJUSTING THE VOLUME

Rotate the **Power** switch/ **Volume** control to adjust the volume. Clockwise increases the volume and counterclockwise decreases it.

### SELECTING A ZONE AND CHANNEL

- 1 Select the desired zone using the key programmed as **[Zone Up]** or **[Zone Down]**.
  - Each zone contains a group of channels.
- 2 Select the desired channel using the **Selector** (default).
  - Each channel is programmed with settings for transmitting and receiving.

### TRANSMITTING

- 1 Select the desired zone and channel.
- 2 Press the key programmed as **[Monitor]** or **[Squelch Off]** to check whether or not the channel is free.
  - If the channel is busy, wait until it becomes free.
- 3 Press the **PTT** switch and speak into the microphone. Release the **PTT** switch to receive.
  - For best sound quality, hold the transceiver approximately 3 ~ 4 cm from your mouth.

## RECEIVING

Select the desired zone and channel. If signaling has been programmed on the selected channel, you will hear a call only if the received signal matches your transceiver settings.

### Receiving Group Calls

When you receive a group call and the received group ID matches the ID set up on your transceiver, you can hear the caller's voice.

### Receiving Individual Calls

When you receive an individual call, a ringing tone will sound. To respond to the call, press and hold the **PTT** switch and speak into the transceiver as you would during a normal transmission.

## LED INDICATOR STATUS

Indicator Color	Meaning
Lights red	Transmitting
Lights green	Receiving a call
Lights blue	The Transceiver Password function is programmed.
Blinks red	Battery power is low while transmitting
Blinks green	Scanning
Blinks orange or blue *	Receiving an encoded call (signaling, etc.)
Blinks red/orange	The selected channel has not been programmed and cannot be used.

\* Your dealer can set the LED to blink either orange or blue for Transceiver operation.



# KENWOOD

## TK-D240

## TK-D340

VHF 数字手持对讲机

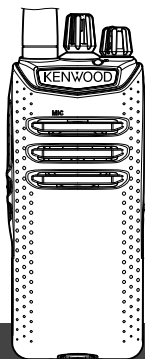
UHF 数字手持对讲机

## 用户指南

本用户指南只涵盖了您收音机的基本操作。关于经销商可能给您的收音机添加的任何定制功能的信息，请咨询您的经销商。关于使用说明书（用户手册）的使用详情，请参阅以下 URL。



[http://manual.kenwood.com/en\\_contents/search/keyword](http://manual.kenwood.com/en_contents/search/keyword)



使用之前请阅读以下信息：

使用产品前请仔细阅读本用户指南，并请妥善保管。

JVCKENWOOD Corporation

## 鸣谢惠购

我们感谢您选择 KENWOOD 作为您的数字对讲机应用程序。

## 目录

用户注意事项 .....	3
注意事项 .....	4
拆开包装箱并检查设备 .....	9
随机附件 .....	9
准备工作 .....	9
安装天线 .....	9
安装信道止动器 .....	10
安装 / 拆卸电池组 .....	11
安装皮带夹 .....	12
安装扬声器 / 麦克风插孔盖 .....	12
安装扬声器 / 麦克风选件（或头戴式耳机） .....	13
介绍 .....	14
基本操作 .....	15
切换电源开 / 关 .....	15
音量调节 .....	15
选择区域和信道 .....	15
发射 .....	15
接收 .....	16
LED 指示灯状态 .....	16

### 固件版权

建伍公司保留建伍产品存储器内嵌固件的产权和版权的所有权。

出版日：2015 年 10 月 1 日

JVC 建伍株式会社

## 用户注意事项

- ◆ 政府法律禁止在政府控制的区域内使用未经当局许可的无线电发射机。
- ◆ 非法使用将会受到罚款或监禁处罚。
- ◆ 只能由有资格的技术人员进行维修。

**安全性:** 操作人员应该知道并了解对讲机操作的一般危险。

本产品所包含的 AMBE +2TM 语音编码技术受 Digital Voice System, Inc. 知识产权 (包括专利权、版权和贸易机密) 的保护。该语音编码技术仅许可用于本通信设备。该技术的使用人员明确禁止尝试提取、移除、破译、反向编译或拆除目标代码, 或以其他方式将目标代码转换为人类可读形式。美国专利编号 #6,199,037, #6,912,495, #8,200,497, #7,970,606, and #8,359,197。

产品中有毒有害物质或元素的名称及含量

部件名称	有毒有害物质或元素					
	铅 (Pb)	汞 (Hg)	镉 (Cd)	六价铬 (Cr(VI))	多溴联苯 (PBB)	多溴二苯醚 (PBDE)
框架	×	○	○	×	○	○
安装基板	×	○	○	○	○	○
电缆	○	○	○	○	○	○
扬声器	○	○	○	×	○	○
其他 (附件)	○	○	○	×	○	○

本表格依据 SJ/T 11364 的规定编制。

○ : 表示该有害物质在该部件所有均质材料中的含量均在 GB/T 26572 规定的限量要求以下。

× : 表示该有害物质至少在该部件的某一均质材料中的含量超出 GB/T 26572 规定的限量要求。



环保使用期限

此图标表示了中国《电子信息产品污染控制管理办法》规定的环保使用期限。只要用户在使用本产品时遵守注意事项中的各项规定, 从制造日期开始到此图标标出的期限为止 (环保使用期限) 既不会污染环境也不会产生对人体有害的物质。

附件和消耗性零件的环保使用期限如下所示:  
(不同产品中包含的附件和消耗性零件也不相同。)  
电缆类: 10年

## 注意事项

- 对讲机和电池潮湿时请勿对其充电。
- 对讲机和电池之间应确保无金属物品。
- 请勿使用非KENWOOD指定的选件。
- 如果压铸底盘和对讲机的其他部件损坏，请勿接触损坏的部件。
- 如果头戴式耳麦或头戴耳机连接到对讲机上，请减小对讲机的音量。当打开静噪时，一定要注意音量。
- 靠近各种机械和电器时，请勿将麦克风电缆挂在颈部周围，因为机械和电器可能会使电缆缠住。
- 请勿将对讲机放置在不稳定的表面上。
- 应确保天线的末端不会碰到您的眼睛。
- 对讲机长时间用于发射时，散热器和底座会变热。更换电池时，请勿接触这些位置。
- 请勿将对讲机浸入水中。
- 安装选件前，一定要关闭对讲机的电源。
- 充电器是将装置与交流电源线断开的设备。应随时提供交流插头。
- 若处理电池，一定要符合您所在国家或地区的法律和法规。



### 警告

在下列场合要关闭对讲机的电源：

- 易爆环境（易燃气体、粉尘、金属粉末以及粒状粉末等）。
- 加油时或停在加油站时。
- 在易爆场所附近。
- 在飞机上。（对讲机的使用必须遵循机组人员的指示和规定。）
- 在粘贴有关于无线电设备的限制或警告的场合，包括但不限于医疗设施。
- 在使用心脏起搏器的人员附近。



## 注意

- 请勿因任何理由拆卸或改装对讲机。
- 汽车正在行驶时，请勿将对讲机放在安全气囊上或其附近。安全气囊打开时，对讲机可能会弹出，击中驾驶员或乘客。
- 当接触天线端时或天线罩露出任何金属部件时，请勿发射。此时发射可能会引起高频灼伤。
- 如果对讲机发出异常气味或冒烟，请立即关闭对讲机的电源，从对讲机中取出电池，并与KENWOOD经销商联系。
- 驾车时使用对讲机可能违反交通方面的法律。请查阅并遵守您所在地区的驾车法规。
- 请勿将对讲机暴露于极热或极冷的气候条件下。
- 请勿将电池（或电池盒）与金属物体放在一起携带，因为金属物体可能会使电池端子短路。
- 如果更换的电池不正确，会有爆炸的危险。请务必更换相同类型的电池。
- 对讲机安装了市场销售的条带时，请不要拿着条带挥舞对讲机。打着人可能会造成伤害，碰着物品可能损坏对讲机。
- 在空气干燥地区操作对讲机时容易产生电荷（静电）。当在这样的情况下使用耳机附件时，可能会使对讲机通过耳机与您的耳朵之间发生放电。在这种场合下我们建议您只使用扬声器 / 麦克风，以避免放电。
- 对讲机安装了市场销售的条带时，请不要拿着条带挥舞对讲机。打着人可能会造成伤害，碰着物品可能损坏对讲机。
- 如果使用市售的颈带，小心不要让带子夹在附近的机器上。
- 切勿将收发器长时间暴露在阳光直射的地方，也不要将其放置在加热设备附近。

## 有关电池组的信息:

电池含有有机溶剂等易燃物体。错误操作可能会造成电池裂开，从而着火或产生过热，使电池失效或造成电池其它形式的损坏。



### 危险

- **请勿拆卸或改造电池!**

电池具有保护功能以及一个保护电路，防止危险。若遭受严重损坏，电池可能会产生热量或烟雾、破裂、或起火。

- **请勿造成电池短路!**

请勿使用任何金属（如回形针或电线）连接+极和-极。请勿用装金属物体（如电线、链式项链或发夹）的容器放置或储存电池。如果电池短路，将会产生过大电流，电池可能会发热或冒烟、破裂或着火。还将造成金属物体发热。

- **请勿焚烧或加热电池!**

若绝缘体熔化，则气体排放出口或安全功能会受损，或者若电解液点燃，电池可能会产生热量或烟雾、破裂或起火。

- **请勿将电池放置在火、炉或其他发热器附近（达到80° C 以上的区域）或在上述环境下使用电池!**

如果聚合物隔离器由于高温而熔化，个别电池可能会内部发生短路，电池可能会产生热量或烟雾、破裂或起火。

- **避免将电池浸入水中或通过其他方式将其弄湿!**

如果电池潮湿，使用前用干燥的毛巾将其擦干。如果电池保护电路受损，电池可能会在过大电流（或电压）下充电，可能会发生异常化学反应。电池可能会产生热量或烟雾、破裂或起火。

- **请勿在炉火或直接阳光照射下给电池充电!**

如果电池保护电路受损，电池可能会在过大电流（或电压）下充电，可能会发生异常化学反应。电池可能会产生热量或烟雾、破裂或起火。



## 危險

- **请勿用任何物体刺入电池、用工具打击或踩踏电池！**  
这有可能破坏电池或使电池变形，造成短路。电池可能会产生热量或烟雾、破裂或起火。
- **请勿震动或抛扔电池！**  
一次冲击可能会造成电池泄露、产生热量或烟雾、破裂或起火。如果电池保护电路受损，电池可能会在过大电流（或电压）下充电，可能会发生异常化学反应。
- **若电池损坏，请勿使用！**  
电池可能会产生热量或烟雾、破裂或起火。
- **请勿直接在电池上焊接！**  
如果绝缘体熔化、或气体排放出口或安全功能受损，电池可能会产生热量或烟雾、破裂或起火。
- **请勿颠倒电池极性（和端子）！**  
当反向给电池充电时，可能会发生异常化学反应。在某些情况下，放电时可能会有大的意想不到的电流流过。电池可能会产生热量或烟雾、破裂或起火。
- **请勿反向给电池充电或反向连接！**  
电池具有正负极。如果电池未能轻易地与充电器或操作设备连接，请勿强迫连接；检查电池极性。如果电池反向连接到充电器上，将会反向充电，可能会发生异常化学反应。电池可能会产生热量或烟雾、破裂或起火。
- **请勿接触破裂以及漏液的电池！**  
如果电池电解液流入眼中，尽快用清水冲洗眼睛，不得揉擦眼睛。立即去医院救治。如果未及时处理，可能会造成眼部疾病



## 警告

- **电池充电请勿超过规定的时间！**  
如果超过规定时间后电池还在充电，请立即停止充电。电池可能会产生热量或烟雾、破裂或起火。
- **请勿将电池放入微波容器或高压容器中！**  
电池可能会产生热量或烟雾、破裂或起火。
- **请将破裂和泄露的电池远离明火！**  
如果电池发生泄露（或电池发出难闻的气味），立即将其远离易燃区。电池中的电解液泄露能轻易引发火灾，并可能会产生热量或烟雾、破裂或起火。
- **请勿使用异常电池！**  
如果电池散发出难闻的气味、看起来颜色发生变化、变形或由于其他原因而看起来异常，将其与充电器或操作设备断开并不再使用。电池可能会产生热量或烟雾、破裂或起火。



---

---

## 拆开包装箱并检查设备

---

---

小心拆开通信机的包装。如果下列物品有缺失或损坏，请立即向承运人提出书面要求。

### 随机附件

- 天线 <C型TK-D340附带>..... 1
- 扬声器/麦克风插孔盖..... 1
- 扬声器/麦克风锁定架..... 1
- 皮带夹(KBH-10)..... 1
- 螺丝(M3 x 8 mm)..... 2
- 信道止动器..... 1
- 用户指南..... 1

---

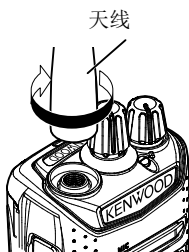
---

## 准备工作

---

---

### 安装天线



握住天线底座并顺时针转动，直至拧紧，以此将天线固定到通信机顶端的连接器上。

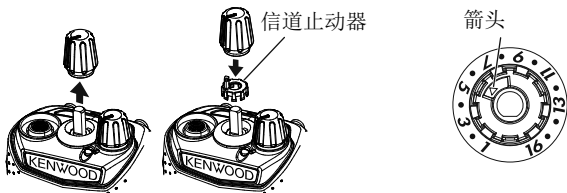
注：

- ◆ 不能将天线用作把手、钥匙环挡圈或扬声器/麦克风的安装点。作为上述用途使用时，可能会损坏天线或降低通信机的性能。

## 安装信道止动器

您可以为信道2、4、6、8、10、12和14设置信道止动器位置。插入信道止动器可防止意外选择不存在的信道。

- 选择不存在的信道可导致发出连续的出错提示音。
- 1 将信道开关置于信道1的位置，然后将信道开关旋钮从通信机中抽出。
    - 如果信道开关不在信道1的位置，说明旋钮可能安装不正确，此时可能无法调换信道。
  - 2 插入信道止动器。
  - 3 将信道止动器的箭头置于通信机的最高信道号处。
  - 4 重新插入信道开关旋钮。



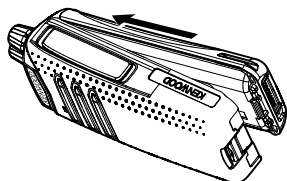
## 安装/拆卸电池组

电池组在出厂时未充电。使用前请为其充电。

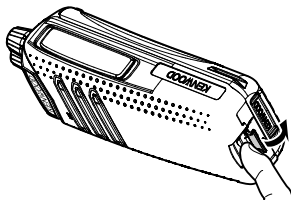


### 注意

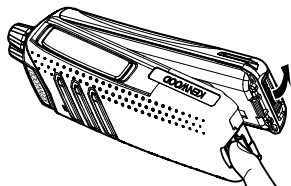
- ◆ 请勿短接电池端子或用焚烧方式处置电池。
- ◆ 切勿尝试除掉电池组的外壳。



- 1 将电池组与通信机的背部对准，然后按压电池组使其与通信机贴紧，直至通信机底座上的释放锁牢牢锁定就位。

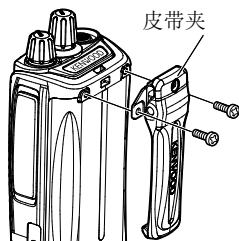


- 2 若要取出电池组，请上提通信机底座上的安全锁，然后按压安全锁下面的释放锁。



- 3 在按住释放锁的同时，将电池组从通信机中抽出。

## 安装皮带夹



必要时，请利用附带的两颗M3 x 8 mm螺丝安装皮带夹。

注：

- ◆ 如果不安装皮带夹，在连续发射或长时间置于炎热环境的情况下，其安装位置可能会变热。



注意

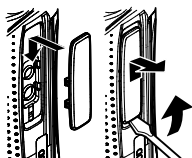
- ◆ 安装皮带夹时，切勿使用胶水来防止螺丝松脱，否则可能导致通信机损坏。胶水中所含的丙烯酸酯会引起通信机的后面板开裂。

## 安装扬声器/麦克风插孔盖

不使用扬声器/麦克风选件时，请安装扬声器/麦克风插孔盖。

注：

- ◆ 为保持通信机的防水效果，请务必用随带的插孔盖将扬声器/麦克风插孔盖好。



- 1 盖好插孔盖，使锁定突起插入通信机凹槽内。
- 2 将插孔盖放好，然后向通信机底端方向按压，直至插孔盖上的突起咔哒一声就位。

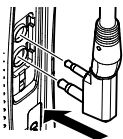
- 若要取下插孔盖，请用手指握住插孔盖的顶端，同时在插孔盖的底部插入一把厚度不超过2mm的平刃螺丝刀。将螺丝刀缓慢滑入，直至其尖端触及插孔盖内的突起，然后轻轻将插孔盖上撬（螺丝刀的手柄向通信机外移动），从而将插孔盖取下。

## 安装扬声器/麦克风选件（或头戴式耳机）

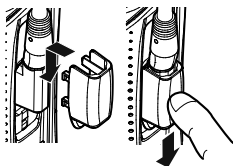
---

注：

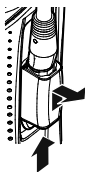
- ◆ 使用扬声器 / 麦克风或头戴式耳机时，通信机不具备完全防水性能。
- 



- 1 将扬声器/麦克风（或头戴式耳机）插头插入通信机的扬声器/麦克风插孔中。

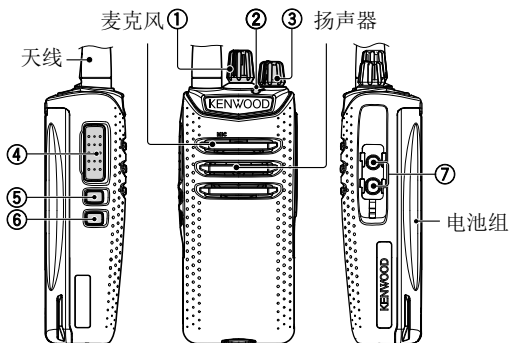


- 2 将锁定架置于扬声器/麦克风（或头戴式耳机）插头上，使锁定突起插入通信机凹槽内。
  - 下压锁定架，将其滑入就位。



- 3 将锁定架放好，然后向通信机底端方向按压，直至锁定架上的突起咔哒一声就位。
  - 若要取下锁定架，请沿底座上推锁定架。

## 介绍



- ① 选择器  
旋转可切换工作信道。
- ② LED指示灯  
有关LED指示灯的状态，请参阅第16页。
- ③ 电源开关/音量控制  
顺时针转动可打开通信机电源。若要关闭通信机电源，请逆时针转动，直至听到咔哒声。旋转可调整音量。
- ④ PTT（按下通话）开关  
按住此开关并对着麦克风讲话，即可进行发射。
- ⑤ 侧面按键1  
按下可启动其可编程功能。
- ⑥ 侧面按键2  
按下可启动其可编程功能。
- ⑦ 扬声器/麦克风插孔  
将扬声器/麦克风插头或头戴式耳机插头插入该插孔中。

### 切换电源开/关

顺时针转动**电源开关/音量控制**可打开通信机电源。

逆时针将**电源开关/音量控制**转到底可关闭通信机电源。

### 音量调节

旋转**电源开关/音量控制**可调节音量。顺时针旋转可提高音量，逆时针旋转则降低音量。

### 选择区域和信道

- 1 利用设置为**[区域上调]**或**[区域下调]**的键选择想要的区域。
  - 每个区域可包含多个信道。
- 2 利用**选择器旋钮**（默认）选择想要的信道/组ID
  - 每个信道均可进行发射和接收设置。

### 发射

- 1 选择想要的区域和信道。
- 2 按下设置为**[监听]**或**[静音打开]**的键，检查信道是否空闲。
  - 如果信道繁忙，请等待直至信道空闲。
- 3 按**PTT**开关并对着麦克风讲话。松开**PTT**开关将转换到接收状态。
  - 为获得最佳的音质，嘴和麦克风之间应保持约3~4厘米的距离。

## 接收

选择想要的区域和信道。如果在所选信道上设置了信令，则只有在接收到符合通信机设置的信令时，您才能听到呼叫。

### 接收组呼

接收到组呼且接收到的组ID 与通信机设置的ID 匹配时，即可听到呼叫者的声音。

### 接收单呼

接收到单呼时，会响起振铃。若要响应呼叫，请按住PTT 开关并像在常规发射期间那样对着通信机讲话。

## LED指示灯状态

指示灯颜色	含义
亮红色	正在发射
亮绿色	正在接收呼叫
闪烁蓝色	通信机密码函数被编程。
闪烁红色	发射时电池电量不足
闪烁绿色	正在扫描
闪烁橙色或蓝色*	正在接收编码后的呼叫（信令等）
闪烁红色/橙色	尚未设置或无法使用所选的信道。

\* 对收发器操作，您的经销商可以将 LED 设定为闪烁橙色或蓝色。