

KDC-201 KDC-101

CD-RECEIVER

INSTRUCTION MANUAL

JVC KENWOOD Corporation



- "Made for iPod," and "Made for iPhone" mean that an electronic accessory has been designed to connect specifically to iPod, or iPhone, respectively, and has been certified by the developer to meet Apple performance standards. Apple is not responsible for the operation of this device or its compliance with safety and regulatory standards. Please note that the use of this accessory with iPod or iPhone may affect wireless performance.
- iPhone, iPod, iPod classic, iPod nano, and iPod touch are trademarks of Apple Inc., registered in the U.S. and other countries.

CONTENTS

BEFORE USE	2
BASICS	3
GETTING STARTED	4
RADIO	5
CD / USB / iPod	6
AUX	8
DISPLAY SETTINGS	8
AUDIO SETTINGS	9
MORE INFORMATION	10
TROUBLESHOOTING	10
SPECIFICATIONS	11
INSTALLATION / CONNECTION	12

How to read this manual

- Operations explained mainly using buttons on the faceplate.
- [XX] indicates the selected items.
- (→ XX) indicates references are available on the stated page number.

BEFORE USE

⚠ Warning

Do not operate any function that takes your attention away from safe driving.

⚠ Caution

Volume setting:

- Adjust the volume so that you can hear sounds outside the car to prevent accident.
- Lower the volume before playing digital sources to avoid damaging the speakers by the sudden increase of the output level.

General:

- Avoid using the USB device or iPod/iPhone if it might hinder driving safety.
- Make sure all important data has been backed up. We shall bear no responsibility for any loss of recorded data.
- Never put or leave any metallic objects (such as coins or metal tools) inside the unit, to prevent a short circuit.
- If a disc error occurs due to condensation on the laser lens, eject the disc and wait for the moisture to evaporate.

Remote control (RC-406):

- Do not leave the remote control in hot places such as on the dashboard.
- The Lithium battery is in danger of explosion if replaced incorrectly. Replace it only with the same or equivalent type.
- The battery pack or batteries shall not be exposed to excessive heat such as sunshine, fire or the like.
- Keep battery out of reach of children and in original package until ready to use. Dispose of used batteries promptly. If swallowed, contact a physician immediately.

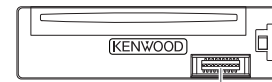
Maintenance

Cleaning the unit: Wipe off dirt on the faceplate with a dry silicon or soft cloth.

Cleaning the connector: Detach the faceplate and clean the connector with a cotton swab gently, being careful not to damage the connector.

Handling discs:

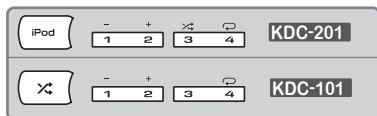
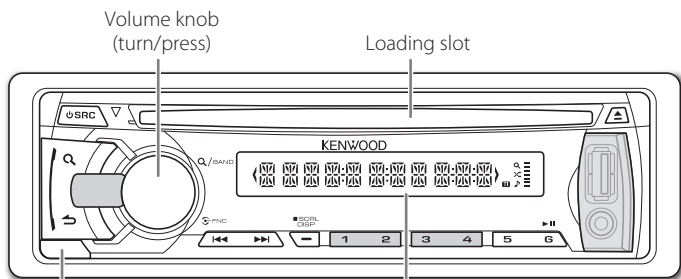
- Do not touch the recording surface of the disc.
- Do not stick tape etc. on the disc, or use a disc with tape stuck on it.
- Do not use any accessories for the disc.
- Clean from the center of the disc and move outward.
- Clean the disc with a dry silicon or soft cloth. Do not use any solvents.
- When removing discs from this unit, pull them out horizontally.
- Remove burrs from the center hole and disc edge before inserting a disc.



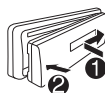
Connector (on the reverse side of the faceplate)

BASICS

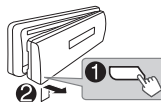
Faceplate



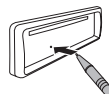
Attach



Detach

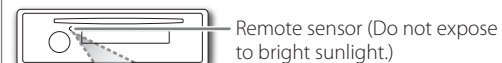


How to reset

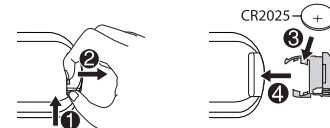


Your preset adjustments will also be erased.

Remote control (RC-406)

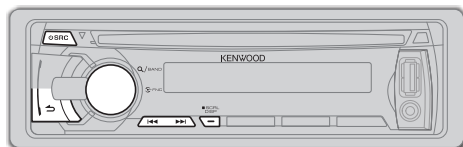


How to replace the battery



To	Do this (on the faceplate)	Do this (on the remote control)
Turn on the power	Press and hold SRC . • Press and hold to turn off the power.	Press and hold SRC to turn off the power. (Pressing SRC does not turn on the power.)
Adjust the volume	Turn the volume knob.	Press VOL \wedge or VOL \vee . Press ATT during playback to attenuate the sound. • Press again to cancel.
Select a source	Press SRC repeatedly.	Press SRC repeatedly.
Change the display information	Press DISP repeatedly. • Press and hold to scroll the current display information.	(not available)

GETTING STARTED



1 Set the clock

- 1 Press the volume knob to enter [FUNCTION].
- 2 Turn the volume knob to select [SETTINGS], then press the knob.
- 3 Turn the volume knob to select [CLOCK], then press the knob.
- 4 Press the volume knob to select [CLOCK ADJ].
- 5 Turn the volume knob to adjust the hour, then press the knob.
- 6 Turn the volume knob to adjust the minute, then press the knob.
Press **◀** / **▶** to move between the hour and minute adjustment.
- 7 Press and hold **↶** to exit.

(or)

Press and hold **DISP** to enter clock adjustment mode directly while in clock display screen.
Then, perform steps **5** and **6** above to set the clock.

2 Set the initial settings

- 1 Press **SRC** to enter [STANDBY].
- 2 Press the volume knob to enter [FUNCTION].
- 3 Turn the volume knob to select [INITIAL SET], then press the knob.
- 4 Turn the volume knob to make a selection (see the table below), then press the knob.
- 5 Press and hold **↶** to exit.

- To return to the previous hierarchy, press **↶**.

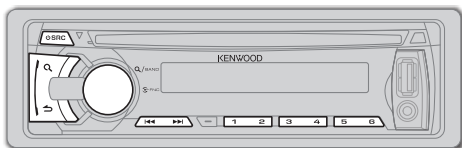
Default: **XX**

PRESET TYPE	NORM: Memorizes one station for each preset button in each band (FM1/ FM2/ FM3/ MW/ SW1/ SW2). ; MIX: Memorizes one station for each preset button regardless of the selected band.
KEY BEEP	ON: Activates the keypress tone. ; OFF: Deactivates.
TDF ALARM	ON: Activates the alarm if you forgot to detach the faceplate when ACC is set to OFF. ; OFF: Deactivates.
BUILTIN AUX	ON: Enables AUX in source selection. ; OFF: Disables. (→ 8)
CD READ	1: Automatically distinguishes between audio file disc and music CD. ; 2: Forces to play as a music CD. No sound can be heard if an audio file disc is played.
SWITCH PRE	REAR/ SUB-W: Selects whether rear speakers or a subwoofer are connected to the line out terminals on the rear (through an external amplifier).
SP SELECT	OFF/ 5/4/ 6*9/6/ OEM: Selects according to the speaker size (5 inches or 4 inches, 6×9 inches or 6 inches) or OEM speakers for optimum performance.

F/W UPDATE

F/W UP xx.xx	YES: Starts upgrading the firmware. ; NO: Cancels (upgrading is not activated). For details on how to update the firmware, see: www.kenwood.com/cs/ce/
---------------------	---

RADIO



Search for a station

- 1 Press **SRC** to select TUNER.
 - 2 Press **Q** repeatedly (or press ***AM-** / **#FM+** on RC-406) to select FM1/ FM2/ FM3/ MW/ SW1/ SW2.
 - 3 Press **◀◀** / **▶▶** to search for a station.
- **To store a station:** Press and hold one of the number buttons (**1** to **6**).
 - **To select a stored station:** Press one of the number buttons (**1** to **6**).

Change the frequency steps

You can change the frequency step of:

FM: 50 kHz to 200 kHz

MW: 9 kHz to 10 kHz

- 1 Press and hold **SRC** to turn off the power.
 - 2 While pressing number buttons **1** and **5**, press **SRC**.
Release your fingers from the buttons after the display appears.
- To restore the initial setting, repeat the same procedure.
 - When the frequency step is changed, the previously stored stations in the memory are deleted.

Direct Access Tuning (using RC-406)

- 1 Press ***AM-** / **#FM+** to select a band.
 - 2 Press **DIRECT** to enter Direct Access Tuning.
“- - - . -” (for FM), “- - - -” (for MW) or “- - - - -” (for SW1/ SW2) appears on the display.
 - 3 Press the number buttons to enter a frequency.
 - 4 Press **ENT ▶▶** to search for a frequency.
- To cancel, press **↶**.
 - If no operation is done for 10 seconds after step **3**, Direct Access Tuning is automatically canceled.

Other settings

- 1 Press the volume knob to enter **[FUNCTION]**.
- 2 Turn the volume knob to select **[SETTINGS]**, then press the knob.
- 3 Turn the volume knob to make a selection (see the table below and on page 6), then press the knob.
- 4 Press and hold **↶** to exit.

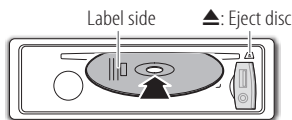
Default: **XX**

LOCAL SEEK	ON: Searches only stations with good reception. (MW/ SW1/ SW2 stations only.) ; OFF: Cancels.
SEEK MODE	Selects the tuning method for the ◀◀ / ▶▶ buttons. AUTO1: Automatically searches for a station. ; AUTO2: Searches for a preset station. ; MANUAL: Manually search for a station.
AUTO MEMORY	YES: Automatically starts memorizing 6 stations with good reception. ; NO: Cancels. (Selectable only if [NORM] is selected for [PRESET TYPE] .) (→ 4)
MONO SET	Selectable only when the source is FM. ON: Improves the FM reception, but the stereo effect may be lost. ; OFF: Cancels.

CD / USB / iPod

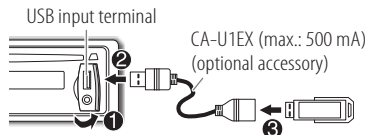
Start playback

CD



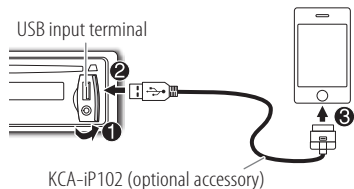
The source changes to CD and playback starts.

USB



The source changes to USB and playback starts.

iPod/iPhone (KDC-201 only)



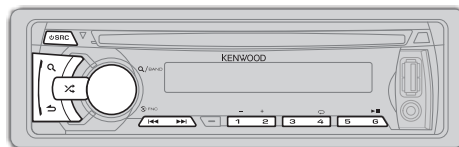
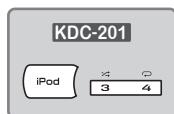
The source changes to iPod and playback starts.

Press and hold **iPod** to select the control mode while in iPod source.

MODE ON: From the iPod*1.

MODE OFF: From the unit.

*1 You can still control play/pause, file selection, fast-forward or reverse files from the unit.



✓ : Applicable
— : Not applicable

To	Do this	CD	USB	iPod
Pause or resume playback	Press 6 ► (or ENT ► on RC-406).	✓	✓	✓
Select a track/file	Press 1 ◀◀ / ▶▶ (or 1 ◀◀ / ▶▶ (+) on RC-406).	✓	✓	✓
Select a folder	Press 1 - / 2 + (or *AM- / #FM+ on RC-406).	✓*2	✓	—
Reverse/Fast-forward	Press and hold 1 ◀◀ / ▶▶ (or 1 ◀◀ / ▶▶ (+) on RC-406).	✓	✓	✓
Select a track/file from a list	<p>1 Press Q.</p> <p>2 Turn the volume knob to make a selection, then press the knob.</p> <ul style="list-style-type: none"> Audio file: Select the desired folder, then a file. iPod or KENWOOD Music Editor Light (KME Light)/ KENWOOD Music Control (KMC) file*4: Select the desired file from the list (PLAYLISTS, ARTISTS, ALBUMS, SONGS, PODCASTS*5, GENRES, COMPOSERS*5). To return to the root folder (or first file), press number button 5. To return to the previous hierarchy, press ↶. To cancel, press and hold ↶. 	✓	✓	✓*3
Repeat play	<p>Press 4 repeatedly.</p> <ul style="list-style-type: none"> Audio CD: TRAC REPEAT, REPEAT OFF Audio file: FILE REPEAT, FOLD REPEAT, REPEAT OFF iPod or KME Light/ KMC file: FILE REPEAT, REPEAT OFF 	✓	✓	✓*3
Random play	<p>Press 3 repeatedly.</p> <ul style="list-style-type: none"> Audio CD: DISC RANDOM, RANDOM OFF Audio file/iPod or KME Light/ KMC file: FOLD RANDOM, RANDOM OFF <p>Press and hold 3 to select "ALL RANDOM."</p>	✓	✓	✓*3

*2 Only for Audio file.

*3 Applicable only when **[MODE OFF]** is selected.

*4 Only for files registered in the database created with KME Light/ KMC. (→ **7**)

*5 Only for iPod.

Direct Music Search (using RC-406)

- 1 Press **DIRECT**.
 - 2 Press the number buttons to enter a track/file number.
 - 3 Press **ENT** to search for music.
- To cancel, press **↵**.
 - Not available if Random Play is selected.
 - Not applicable for iPod, KME Light/ KMC file. (→ 10)

Select a song by name (for **KDC-201)**

While listening to iPod...

- 1 Press **Q**.
 - 2 Turn the volume knob to select a category, then press the knob.
 - 3 Press **Q** again.
 - 4 Turn the volume knob to select the character to be searched for.
 - 5 Press **◀◀ / ▶▶** to move to the entry position. You can enter up to three characters.
 - 6 Press the volume knob to start searching.
 - 7 Turn the volume knob to make a selection, then press the knob.
Repeat step 7 until the desired item is selected.
- To search for a character other than A to Z and 0 to 9, enter only "*".
 - To return to the previous hierarchy, press **↵**.
 - To return to the top menu, press number button **5**.
 - To cancel, press and hold **↵**.
 - Turning the volume knob fast in the Music search mode allows you to enter the alphabet search mode.

Set the skip ratio

While listening to iPod (for **KDC-201**) or KME Light/ KMC file...

- 1 Press the volume knob to enter **[FUNCTION]**.
- 2 Turn the volume knob to select **[SETTINGS]**, then press the knob.
- 3 Turn the volume knob to select **[SKIP SEARCH]**, then press the knob.
- 4 Turn the volume knob to make a selection, then press the knob.
0.5% (default)/ **1%**/ **5%**/ **10%**: Sets the skip ratio when searching for a song.
(Pressing **◀◀ / ▶▶** continuously, for longer than 3 seconds will skip songs at a 10% ratio regardless of previously configured settings.)
- 5 Press and hold **↵** to exit.

Muting upon the reception of a phone call

Connect the MUTE wire to your telephone using a commercial telephone accessory. (→ 13)

When a call comes in, "CALL" appears.

- The audio system pauses.
- To continue listening to the audio system during a call, press **⏻ SRC**. "CALL" disappears and the audio system resumes.

When the call ends, "CALL" disappears.

- The audio system resumes.

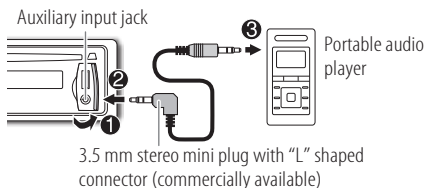
AUX

Preparation:

Select **[ON]** for **[BUILTIN AUX]**. (→ 4)

Start listening

- 1 Connect a portable audio player (commercially available).



- 2 Press **⏻ SRC** to select AUX.
- 3 Turn on the portable audio player and start playback.

Set the AUX name

While listening to AUX...

- 1 Press the volume knob to enter **[FUNCTION]**.
- 2 Turn the volume knob to select **[SETTINGS]**, then press the knob.
- 3 Turn the volume knob to select **[AUX NAME]**, then press the knob.
- 4 Turn the volume knob to make a selection, then press the knob.
AUX (default) / **DVD** / **PORTABLE** / **GAME** / **VIDEO** / **TV**
- 5 Press and hold **↩** to exit.

DISPLAY SETTINGS

- 1 Press the volume knob to enter **[FUNCTION]**.
- 2 Turn the volume knob to select **[SETTINGS]**, then press the knob.
- 3 Turn the volume knob to make a selection (see the table below), then press the knob.
Repeat step **3** until the desired item is selected or activated.
- 4 Press and hold **↩** to exit.

• To return to the previous hierarchy, press **↩**.

Default: **XX**

DISPLAY

DISP DIMMER	ON: Dims the display illumination. ; OFF: Cancels.
TEXT SCROLL	AUTO/ ONCE: Selects whether to scroll the display information automatically, or scroll only once. ; OFF: Cancels.

AUDIO SETTINGS

While listening to any source...

- 1 Press the volume knob to enter [FUNCTION].
- 2 Turn the volume knob to select [AUDIO CTRL], then press the knob.
- 3 Turn the volume knob to make a selection (see the table below), then press the knob.
Repeat step 3 until the desired item is selected or activated.
- 4 Press and hold ↵ to exit.
 - To return to the previous hierarchy, press ↶.

Default: **XX**

SUB-W LEVEL	-15 to +15 (0):	Adjusts the subwoofer output level.
BASS LEVEL	-8 to +8 (+8):	Adjusts the level to memorize for each source.
MID LEVEL	-8 to +8 (+2):	(Before making an adjustment, select the source you want to adjust.)
TRE LEVEL	-8 to +8 (+3):	
EQ PRO		
BASS ADJUST	BASS C FRQ	60/ 80/ 100/ 200: Selects the center frequency.
	BASS LEVEL	-8 to +8 (+8): Adjusts the level.
	BASS Q FCTR	1.00/ 1.25/ 1.50/ 2.00: Adjusts the quality factor.
	BASS EXTEND	ON: Turns on the extended bass. ; OFF: Cancels.
MID ADJUST	MID C FRQ	0.5K/ 1.0K/ 1.5K/ 2.5K: Selects the center frequency.
	MID LEVEL	-8 to +8 (+2): Adjusts the level.
	MID Q FCTR	0.75/ 1.00/ 1.25: Adjusts the quality factor.
TRE ADJUST	TRE C FRQ	10.0K/ 12.5K/ 15.0K/ 17.5K: Selects the center frequency.
	TRE LEVEL	-8 to +8 (+3): Adjusts the level.
PRESET EQ	NATURAL/ USER/ ROCK/ POPS/ EASY/ TOP40/ JAZZ/ POWERFUL: Selects a preset equalizer suitable to the music genre. (Select [USER] to use the customized bass, middle, and treble settings.)	

BASS BOOST	B.BOOST LV1/ B.BOOST LV2/ B.BOOST LV3: Selects your preferred bass boost level. ; OFF: Cancels.
LOUDNESS	LOUD LV1/ LOUD LV2: Selects your preferred low and high frequencies boost to produce a well-balanced sound at a low volume level. ; OFF: Cancels.
BALANCE	L15 to R15 (0): Adjusts the left and right speaker output balance.
FADER	R15 to F15 (0): Adjusts the rear and front speaker output balance.
SUB-W SET	ON: Turns on the subwoofer output. ; OFF: Cancels.

DETAIL SET

LPF SUB-W	THROUGH: All signals are sent to the subwoofer. ; 85HZ/ 120HZ/ 160HZ: Audio signals with frequencies lower than 85 Hz/ 120 Hz/ 160 Hz are sent to the subwoofer.
SUB-W PHASE	REV (180°)/ NORM (0°): Selects the phase of the subwoofer output to be in line with the speaker output for optimum performance. (Selectable only if a setting other than [THROUGH] is selected for [LPF SUB-W].)
SUPREME SET	ON: Creates realistic sound by interpolating the high-frequency components that are lost in Audio file audio compression. ; OFF: Cancels. (Selectable only when playing back an Audio file disc, a USB device, or the iPhone/iPod.)
VOL OFFSET (Default: 0)	-8 to +8 (for AUX); -8 to 0 (for other sources): Presets the volume adjustment level of each source. (Before adjustment, select the source you want to adjust.)

- [SUB-W LEVEL]/ [SUB-W SET]/ [LPF SUB-W]/ [SUB-W PHASE] is selectable only if [SWITCH PRE] is set to [SUB-W]. (→ 4)
- [SUB-W LEVEL]/ [LPF SUB-W]/ [SUB-W PHASE] is selectable only if [SUB-W SET] is set to [ON].

MORE INFORMATION

General

- This unit can only play the following CDs:



- Detailed information and notes about the playable audio files are stated in an online manual on the following site: www.kenwood.com/cs/ce/audiofile/

Playable files

- Playable Audio file:
 - MP3 (.mp3), WMA (.wma)
- Playable disc media: CD-R/RW/ROM
- Playable disc file formats: ISO 9660 Level 1/2, Joliet, Romeo, Long file name.
- Playable USB device file system: FAT12, FAT16, FAT32

Although the audio files are compiled with the standards listed above, playback maybe impossible depending on the types or conditions of media or device.

Unplayable discs

- Discs that are not round.
- Discs with coloring on the recording surface or discs that are dirty.
- Recordable/ReWritable discs that have not been finalized.
- 8 cm CD. Attempting to insert using an adapter may cause malfunction.

About USB devices

- This unit can play Audio files stored on a USB mass storage class device.
- You cannot connect a USB device via a USB hub and Multi Card Reader.
- Connecting a cable whose total length is longer than 5 m may result in abnormal playback.
- This unit cannot recognize a USB device whose rating is other than 5 V and exceeds 1 A.

About iPod/iPhone

Made for

- iPod touch (1st, 2nd, 3rd, and 4th generation)
- iPod classic
- iPod with video
- iPod nano (1st, 2nd, 3rd, 4th, 5th, and 6th generation)
- iPhone, iPhone 3G, 3GS, 4, 4S
- For the latest compatible list and software versions of iPhone/iPod, see: www.kenwood.com/cs/ce/ipod
- If you start playback after connecting the iPod, the music that has been played by the iPod is played first.

- In this case, "RESUMING" is displayed without displaying a folder name, etc. Changing the browse item will display the correct title, etc.
- You cannot operate iPod if "KENWOOD" or "✓" is displayed on iPod.

About "KENWOOD Music Editor Light" and "KENWOOD Music Control"

- This unit supports the PC application "KENWOOD Music Editor Light" and Android™ application "KENWOOD Music Control".
- When you use an audio file with database information added using the "KENWOOD Music Editor Light" or "KENWOOD Music Control," you can search for a file by title, album or artist name using Music Search.
- "KENWOOD Music Editor Light" and "KENWOOD Music Control" are available from the following web site: www.kenwood.com/cs/ce/

TROUBLESHOOTING

Symptom	Remedy
Sound cannot be heard.	<ul style="list-style-type: none"> Adjust the volume to the optimum level. Check the cords and connections.
"PROTECT" appears and no operations can be done.	Check to be sure the terminals of the speaker wires are insulated properly, then reset the unit. If this does not solve the problem, consult your nearest service center.
<ul style="list-style-type: none"> Sound cannot be heard. The unit does not turn on. Information shown on the display is incorrect. 	Clean the connectors. (→ 2)
The unit does not work at all.	Reset the unit. (→ 3)
<ul style="list-style-type: none"> Radio reception is poor. Static noise while listening to the radio. 	<ul style="list-style-type: none"> Connect the antenna firmly. Pull the antenna out all the way.
"NA FILE" appears.	Make sure the disc contains supported audio files. (→ 10)
"NO DISC" appears.	Insert a playable disc into the loading slot.
"TOC ERROR" appears.	Make sure the disc is clean and inserted properly.
"PLS EJECT" appears.	Reset the unit. If this does not solve the problem, consult your nearest service center.
Disc cannot be ejected.	Press and hold ▲ to forcibly eject the disc. Be careful not to drop the disc when it is ejected. If this does not solve the problem, reset the unit. (→ 3)
"READ ERROR" appears.	Copy the files and folders onto the USB device again. If this does not solve the problem, reset the USB device or use another USB device.
"NO DEVICE" appears.	Connect a USB device, and change the source to USB again.
"COPY PRO" appears.	A copy-protected file is played.
"NO MUSIC" appears.	Connect a USB device that contains playable audio files.
"NA DEVICE" appears.	Connect a supported USB device, and check the connections.
"USB ERROR" appears.	<ul style="list-style-type: none"> Remove the USB device, turn the unit off, then turn it on again. Try to connect another USB device.
"iPod ERROR" appears.	<ul style="list-style-type: none"> Reconnect the iPod. Reset the iPod.
Noise is generated.	Skip to another track or change the disc.
Tracks do not play back as you have intended them to play.	Playback order is determined when files are recorded.
"READING" keeps flashing.	Do not use too many hierarchical levels or folders.
Elapsed playing time is not correct.	This is caused by how the tracks are recorded.
The number of songs contained in the "SONGS" category of this unit is different from the iPod/iPhone.	Podcast files are not counted on this unit as this unit does not support the playback of podcast files.

SPECIFICATIONS

Subject to change without notice.

Tuner	FM	Frequency Range	87.9 MHz to 107.9 MHz (200 kHz space) 87.5 MHz to 108.0 MHz (50 kHz space)	
		Usable Sensitivity (S/N = 26 dB)	7.2 dBf (0.63 μ V/75 Ω)	
	Quieting Sensitivity (DIN S/N = 46 dB)	15.2 dBf (1.6 μ V/75 Ω)		
	Frequency Response (± 3 dB)	30 Hz to 15 kHz		
	Signal-to-Noise Ratio (MONO)	75 dB		
	Stereo Separation (1 kHz)	45 dB		
	AM	Frequency Range	Band 1 (MW)	530 kHz to 1 700 kHz (10 kHz space) 531 kHz to 1 611 kHz (9 kHz space)
			Band 2 (SW1)	2 940 kHz to 7 735 kHz (5 kHz space)
Band 3 (SW2)			9 500 kHz to 10 135 kHz/ 11 580 kHz to 18 135 kHz (5 kHz space)	
Usable Sensitivity (S/N = 20 dB)		MW: 31 dB μ (36 μ V) / SW: 32 dB μ (40 μ V)		

CD player	Laser Diode	GaAlAs
	Digital Filter (D/A)	8 times over sampling
	D/A Converter	24 Bit
	Spindle Speed	500 rpm to 200 rpm (CLV)
	Wow & Flutter	Below measurable limit
	Frequency Response (± 1 dB)	20 Hz to 20 kHz
	Total Harmonic Distortion (1 kHz)	0.01 %
	Signal-to-Noise Ratio (1 kHz)	105 dB
	Dynamic Range	90 dB
	MP3 Decode	Compliant with MPEG-1/2 Audio Layer-3
WMA Decode	Compliant with Windows Media Audio	

USB	USB Standard	USB 1.1, USB 2.0 (Full speed)
	Maximum Supply Current	DC 5 V \leq 1 A
	File System	FAT12/ 16/ 32
	MP3 Decode	Compliant with MPEG-1/2 Audio Layer-3
WMA Decode	Compliant with Windows Media Audio	

Audio	Maximum Output Power	50 W \times 4	
	Full Bandwidth Power	22 W \times 4 (at less than 1 % THD)	
	Speaker Impedance	4 Ω to 8 Ω	
	Tone Action	Bass	100 Hz \pm 8 dB
		Middle	1 kHz \pm 8 dB
		Treble	12.5 kHz \pm 8 dB
Preout Level / Load (CD)	2 500 mV/10 k Ω		
Preout Impedance	\leq 600 Ω		

Auxiliary	Frequency Response (± 3 dB)	20 Hz to 20 kHz
	Input Maximum Voltage	1 200 mV
	Input Impedance	10 k Ω

General	Operating Voltage	14.4 V (11 V to 16 V allowable)
	Maximum Current Consumption	10 A
	Installation Size (W \times H \times D)	182 mm \times 53 mm \times 159 mm
	Weight	1.1 kg

⚠ Warning

- The unit can only be used with a 12 V DC power supply, negative ground.
- Disconnect the battery's negative terminal before wiring and mounting.
- Do not connect Battery wire (yellow) and Ignition wire (red) to the car chassis or Ground wire (black) to prevent a short circuit.
- Insulate unconnected wires with vinyl tape to prevent a short circuit.
- Be sure to ground this unit to the car's chassis again after installation.

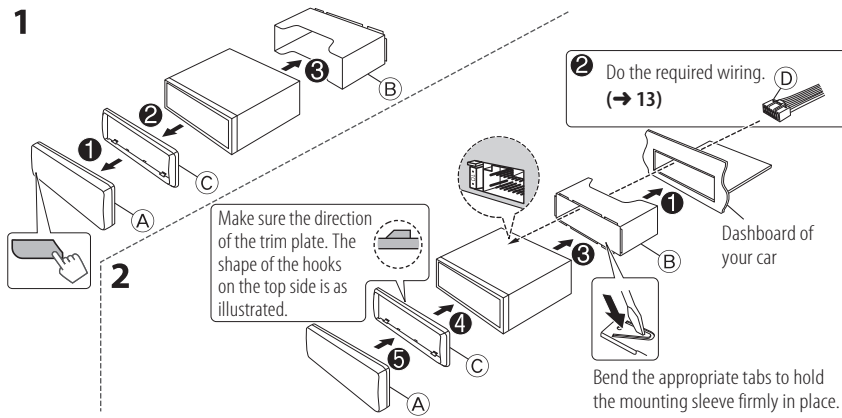
⚠ Caution

- For safety's sake, leave wiring and mounting to professionals. Consult the car audio dealer.
- Install this unit in the console of your vehicle. Do not touch the metal parts of this unit during and shortly after use of the unit. Metal parts such as the heat sink and enclosure become hot.
- Do not connect the \ominus wires of speaker to the car chassis, Ground wire (black), or in parallel.
- Mount the unit with the angle of 30° or less.
- If your vehicle wiring harness does not have the ignition terminal, connect Ignition wire (red) to the terminal on the vehicle's fuse box which provides 12 V DC power supply and is turned on and off by the ignition key.
- After the unit is installed, check whether the brake lamps, blinkers, wipers, etc. on the car are working properly.
- If the fuse blows, first make sure the wires are not touching car's chassis, then replace the old fuse with one that has the same rating.

Basic procedure

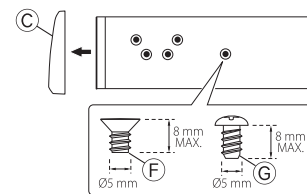
- 1 Remove the key from the ignition switch, then disconnect the \ominus terminal of the car battery.
- 2 Connect the wires properly.
See Wiring connection. (→ 13)
- 3 Install the unit to your car.
See Installing the unit (in-dash mounting).
- 4 Connect the \ominus terminal of the car battery.
- 5 Reset the unit. (→ 3)

Installing the unit (in-dash mounting)



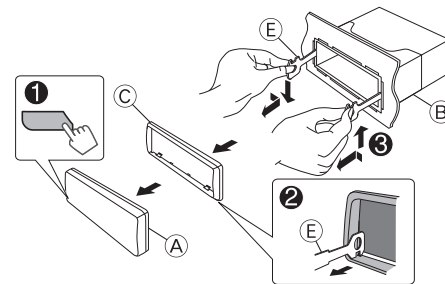
When installing without the mounting sleeve

- 1 Remove the mounting sleeve and trim plate from the unit.
- 2 Align the holes in the unit (on both sides) with the vehicle mounting bracket and secure the unit with the supplied screws.

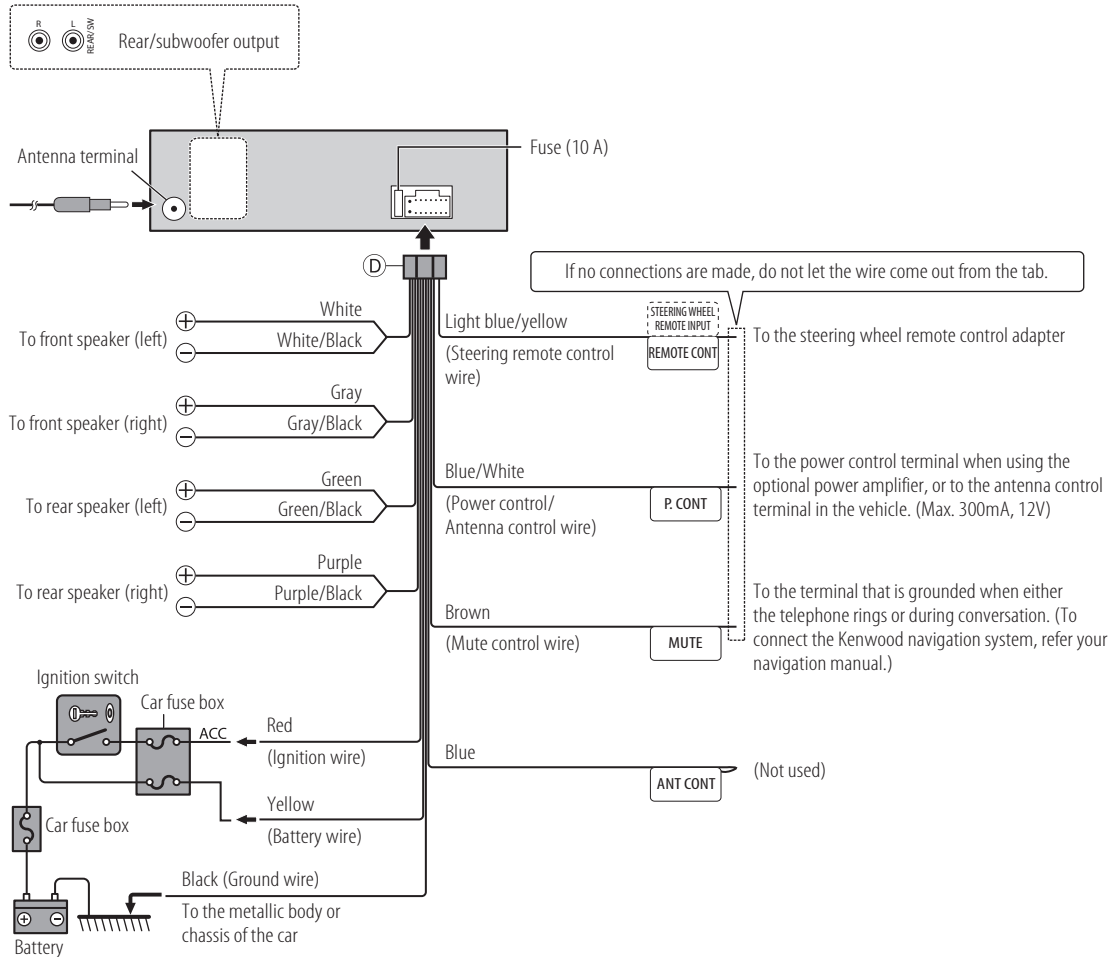


How to remove the unit

- 1 Detach the faceplate.
- 2 Fit the catch pin on the extraction keys into the holes on both sides of the trim plate, then pull it out.
- 3 Insert the extraction keys deeply into the slots on each side, then follow the arrows as shown on the right.



Wiring connection



Part list for installation

- A Faceplate (×1)
- B Mounting sleeve (×1)
- C Trim plate (×1)
- D Wiring harness (×1)
- E Extraction key (×2)
- F Flat head screw (×4)
- G Round head screw (×4)



CLASS 1
LASER PRODUCT

The marking of products using lasers

The label is attached to the chassis/case and says that the component uses laser beams that have been classified as Class 1. It means that the unit is utilizing laser beams that are of a weaker class. There is no danger of hazardous radiation outside the unit.